

Diversified Communications

1-866-388-3989

Digital Video Surveillance Systems

Setting the Standard for Performance in CCTV....

Enforcer series

New software release version **8.1**

New Face Indexing technology

Open hardware architecture gives you better compatibility.

Backward compatible software engineering.

Windows XP based with an On Board recovery System.

New Monitoring station software available.

New Access Control interface module compatibility.

With the release of our new version 8.1 software, DVSS has again redefined what a surveillance system should be. Cutting-edge new features along with significant enhancements of some of our existing ones make DVSS brand surveillance products the obvious choice for discriminating security professionals.

Our innovation doesn't stop at software development. Properly designed and configured hardware is equally as important. We build our surveillance platforms with reliability, flexibility and upgradeability in mind. One good example is our removable hard drive bay system. This allows for easily and economically configured video storage, using inexpensive and readily available standard IDE hard drives. Even more significantly, when originally recorded medium is required for evidence, this allows for zero down-time compliance.

We know that each customer's application is unique; therefore the equipment must be capable of delivering exactly the features and performance required. We accomplish this with an open architecture approach to our hardware design and a "backward compatibility" commitment in our software development; this assures system viability and flexibility for years to come.

Integration of our products is critical which is why we rely on a Microsoft Windows XP Professional operating system to assure broad-based compatibility. DVSS has been a leader in Windows based video surveillance for many years and continues to set the standard

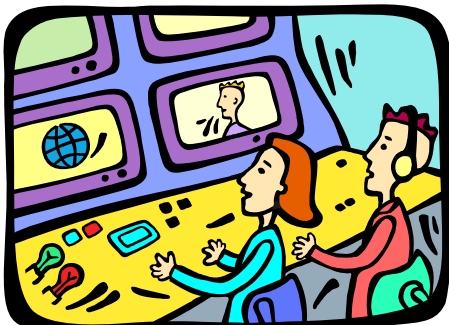
"Virtual Technical Support is like having your own in house I.T. expert!"

Virtual Technical Support (VTS)

DVSS now offers Virtual Technical Support (VTS). This is the very latest in technical support services. Our factory trained technicians can assist you remotely over the internet.

We also offer training and certification for installation of our products via our Online Training Courses (OTC). Call our office to schedule a time.

1-866-840-9080



Enforcer series Surveillance System

Product Features

*"The features listed are
for version 8.1"*



- 740 x 480 Resolution (available in High Speed Recording)
- **New** H.264 compression.
- **New** I.P. camera support (Call for compatibility)
- 240 True Frames per Second Record Speed (Equals 480 ips)
- 16 & 8 camera models available
- 16 & 8 channels audio on board
- Audio event annunciation, prerecorded or self recorded audio messages
- **New** face recognition Indexing. A new technology that captures face from video and displays them as thumb nails.
- **New** PLC (programmable logical control) drop and drag interface.
- Multiple monitor support
- Round the clock; motion detect; alarm and scheduled recording also special event recording (POS filter etc)
- Connect multiple DVSS units together (connect any DVSS units together regardless of the model) Special integration software included
- Connect up to 120 clients, expandable to thousands (optional)
- Network bandwidth throttles and active bandwidth monitoring
- 11X Digital zoom on playback and additional video enhancement such as backlight compensation, smoothing, sharpening etc
- Pre and Post motion record adjustable per application
- **New** Virtual on screen PTZ control, 18 separate formats supported
- Proprietary fast Mpeg compression technology as well as standard Mpeg 4 and Wavelet formats supported
- Up to 72 inputs and 144 programmable relay outputs supported (optional)
- E-map features a graphic layout of monitored area. Cameras and monitored devices are placed in the interactive E-map (floor plan). Available live and remotely.
- **New** improved Data Capture/Point of Sale (POS) integration. Creates databases capable of video search and monitoring filters, exportable Excel format
- **New** Image indexing: system can capture a thumb nail image and list the images in a searchable page to identify objects in a click to see format.
- Object counting and moving object intrusion technology: allows directional counting and intrusion detection
- Missing Object Detection: senses when a monitored object leaves the image, can be used to invoke audio alarm, e-mail, pager, phone call, trigger output etc
- Suspicious Object Detection: Sense presence of unrecognized objects (acts similar to missing object detection and object intrusion)
- Live two way audio over IP, communicate remotely through a DVSS system
- Free dynamic IP support and software
- Vital Sign Monitor: remotely monitor servers in the field for all critical functions
- Optional hand held IR remote control
- Onboard recovery system: backs up OS, software, factory specs and final setup in protected partition
- **New** Center V2 (starter version 5 systems) included!

Enforcer Series

Technical Specifications

Electrical

Input Voltage	100-240 VAC, 50/60 Hz, auto-ranging (DVSS highly recommends use of UPS system of 1000VA or higher)	
Power Consumption	400 Watts Max	
Operating System	Windows XP Pro, Recovery disk included	
Processor	Intel Pentium 4, 2.8 ghz Hyper thread	
Memory	1 gb	
Internal HD	160 gb IDE or SATA	
Additional HD info	5 Hard Drive trays	
VGA Outputs	One	
Analog Video Out	One includes independent real time display quad, 16 ,scan and other displays	
Video Inputs	8, 16 BNC	
Audio Inputs	8/16 RCA	
RS485 connections	Optional Part# DVSSNETCARD or DVSSNETBOX (usb) or DVSS4I/O (4Input/4outputs)	
I/O Connections	Four each optional (expandable to 72 input / 144 Programmable relays out){.25amp @ 120VAC, 2amps @ 30VDC on card}[10 amps @ 125VAC, 5 amps @ 28VDC on relay expansion module]	
Signal System	NTSC / PAL	
Recording Resolutions	NTSC	PAL
	320 x 240	352 x 288
	640 x 240	704 x 288
	640 x 480	704 x 576
	640 x 480SW *	720 x 288
	720 x 480	720 x 576
	720 x 480SW*	
	* SW is software enhancement	
Record Rate	240 FPS (dynamic allocation) (2IPS = 1 FPS)	



Mechanical

Connectors	
BNC	Video inputs and outputs
6-pin mini-DIN	PS/2 mouse and keyboard
DB9	COM 1 (expandable to 5 optional)
DB15	Monitor port (SVGA) and audio inputs
RJ-45	Ethernet port (100 Base T) and RS-485/RS422 ports
S-Video	Analog monitor output
USB	Six high-speed USB 2.0 ports in the rear
Mini RCA	Audio output

General

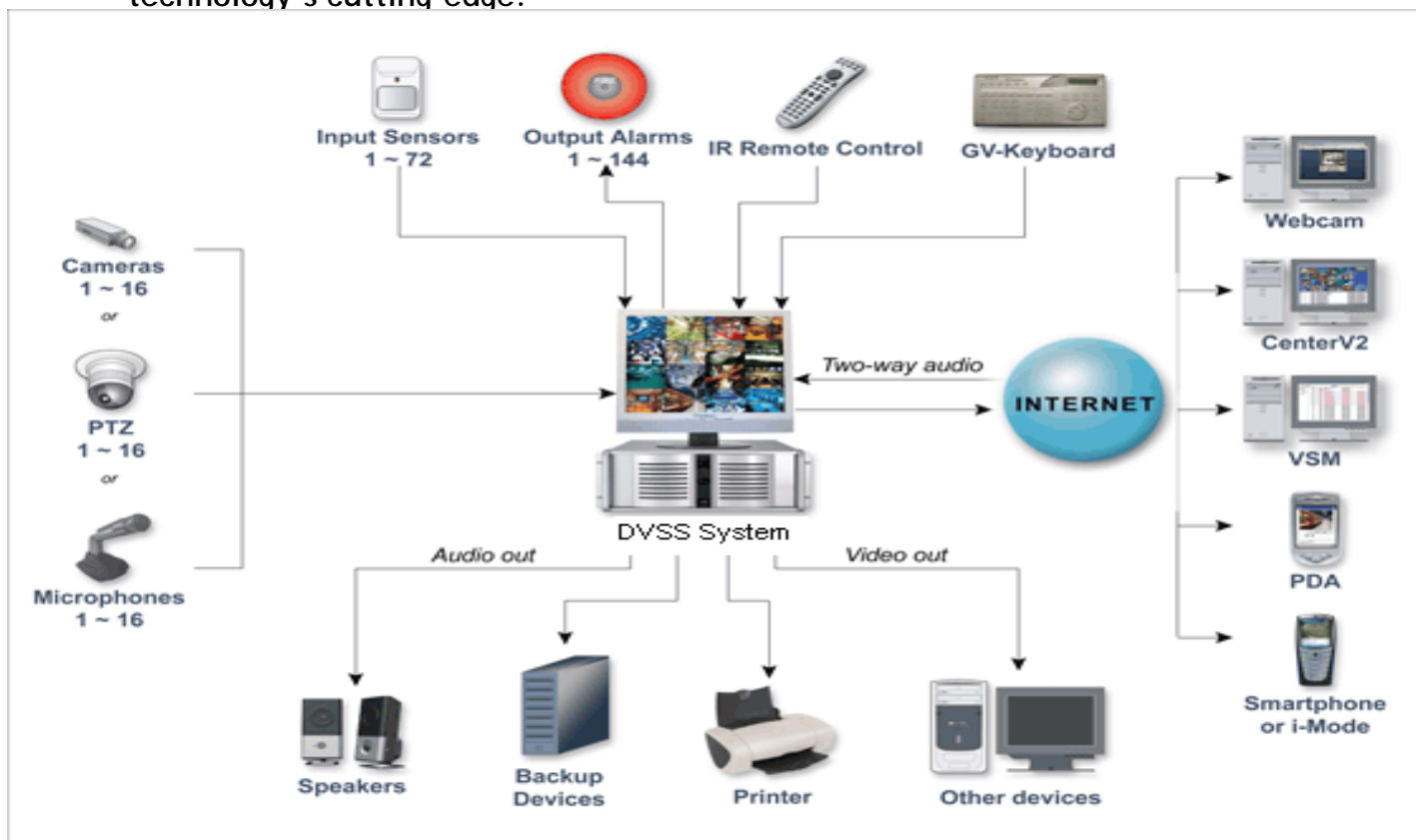
Environmental	
Operating Temp	50° to 95°F (10° to 35°C)
Relative Humidity	Maximum 80%, non-condensing
Dimensions	7.0 (H) x 17.0 (W) x 20.0 (D) (4RUs)
Unit Weight (Approx)	60lbs approx. depending on additional parts

A new way to look at security.....

The illustration below will give you an idea of the level of integration currently available with DVSS surveillance technology. This is by no means the limits of our connectivity, but is representative of the more commonly configured system. Integration of multiple systems may be achieved via LAN and WAN connections, allowing levels of integration previously unthinkable.

All of the technology in the universe is of little use, if it is not easy to operate. By following logic patterns very similar to that of WINDOWS XP PRO, most new users find our software to be familiar, straight-forward and non-threatening. We also provide a very good on-board user manual, which is convenient and simple. There are so many features on-board to assist in video search and automation of critical functions, that our systems practically run themselves.

Most important to us is the fact that DVSS technology is continuously evolving, meaning that the product you purchase today, will continue to advance as technology moves forward, free software upgrades from DVSS keeps you on technology's cutting-edge.



Diversified Communications
1-866-388-3989